

# frozy®

## FR75C



### Usage Areas



Hotel



Restaurant



Fast Food



Cocktail



Disco



Industry



### Technical Information

Daily Production Capacity	72 kg	Finish	AISI 304 SS
Store Capacity	40 kg	Cooling System	Air
Ice Capacity Per Cycle	112 Units	Product Dimension w*d*h	738*600*822
Refrigerant Gas	R290	Packing Dimension w*d*h	800*660*1000
Current	16 A	Net Weight	66 kg
Maximum Power	710 W	Loading Quantities 20 DC	72 Units
Daily Electric Consumption	12,6 Kw	Loading Quantities 40 DC	216 Units
Voltage	230V-50 Hz	Loading Quantities Optima	279 Units

### Special Features



Sprayer System



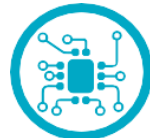
Polyurethane Cabinet



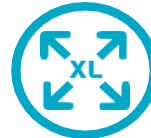
Air Cooling



Easy Clean Surface



Electronic Control



Large Ice Storage Area



T Climate Type



Antibacterial Storage Area



Magnetic Pump



Door with Handle



Easy Clean Air Filter



Multifunction Button



Service Kit Drain Pump



Easy Access



Sliding Lid



Optional Touch Screen Control

### Ice Cubes and Sizes



12 gr/unit

### Certifications



# frozy®

TASİS MAK.MÜH.SAN.TİC.A.Ş.  
Org.San.Böl. 34.Cad. No:11,  
26110, Eskişehir/Turkey  
+ 90 222 236 82 20  
+ 90 222 236 82 21  
marketing@frozy.com.tr

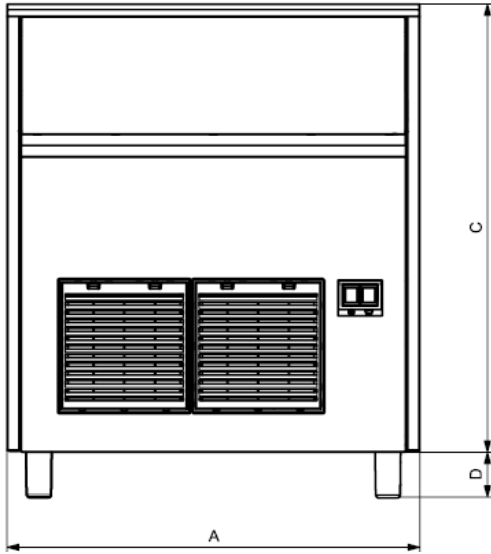
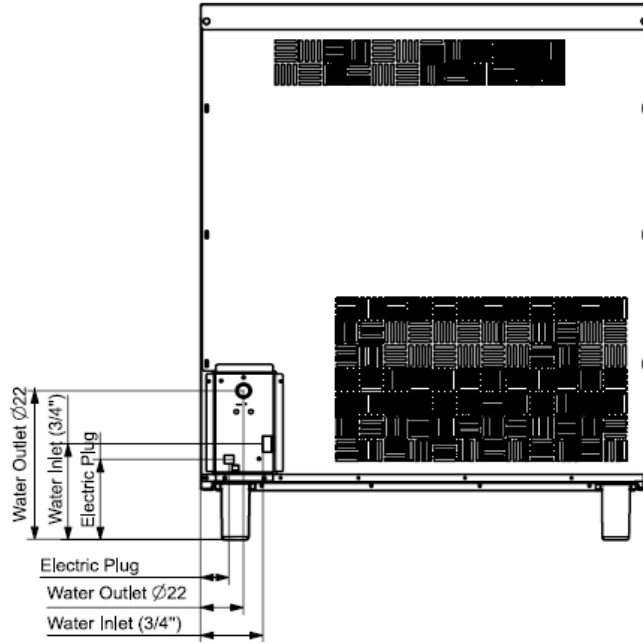
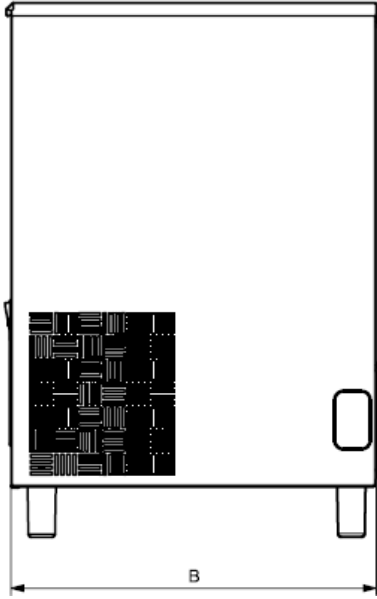
CLIMAX COOLER MAK.MÜH.DAN.A.Ş.  
Org.San.Böl. 34.Cad. No:11,  
26110, Eskişehir/Turkey  
+ 90 222 236 82 20  
+ 90 222 236 82 21  
marketing@frozy.com.tr



www.frozy.com.tr



## Product Dimensions



Model	A (mm)	B (mm)	C (mm)	D (mm)	Water Inlet Horizontal (mm)	Water Inlet Vertical (mm)	Water Outlet Horizontal (mm)	Water Outlet Vertical (mm)	Electric Plug Horizontal (mm)	Electric Plug Vertical (mm)
FR75C	738	600	822	D1-D2	103	163	71	253	47	133

Option	D (mm)	
Standard Adjustable Feet	D1	95
Short Adjustable Feet	D2	10

## Limits

- Water inlet 3/4"
- Water outlet 22 mm
- Water Pressure Min 1 Bar/Max 5 Bar

All technical informations must be considered as following conditions

*Ambient temperature : 10°C*

*Water temperataure : 10°C*

*Electric consumption at : 20°C (Standard Voltage)*

*The company has righth to change all informations without notification*

## Ice Making Capacities

Ambient Tem. °C	Water Temperature °C			
	10°	15°	21°	32°
10°	100%	98%	95%	93%
21°	98%	96%	90%	87%
32°	90%	87%	80%	78%
38°	80%	75%	70%	60%



