



Usage Areas



Hotel



Restaurant



Fast Food



Cocktail



Disco



Industry



Technical Information

Daily Production Capacity	115 kg	Finish	AISI 304 SS
Store Capacity	40 kg	Cooling System	Air
Ice Capacity Per Cycle	Continually	Product Dimension w*d*h	738*690*822
Refrigerant Gas	R290	Packing Dimension w*d*h	800*750*1000
Current	10 A	Net Weight	67 kg
Maximum Power	670 W	Loading Quantities 20 DC	46 Units
Daily Electric Consumption	11,9 Kw	Loading Quantities 40 DC	102 Units
Voltage	230V-50 Hz	Loading Quantities Optima	120 Units

Special Features



Sprayer System



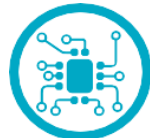
Polyurethane Cabinet



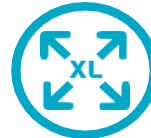
Air Cooling



Easy Clean Surface



Electronic Control



Large Ice Storage Area



T Climate Type



Antibacterial Storage Area



Magnetic Pump



Door with Handle



Easy Clean Air Filter



Multifunction Button



Service Kit Drain Pump



Easy Access



Sliding Lid



Optional Touch Screen Control

Ice Cubes and Sizes



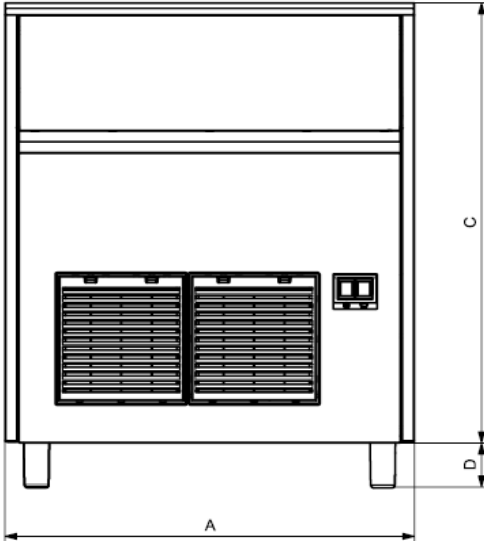
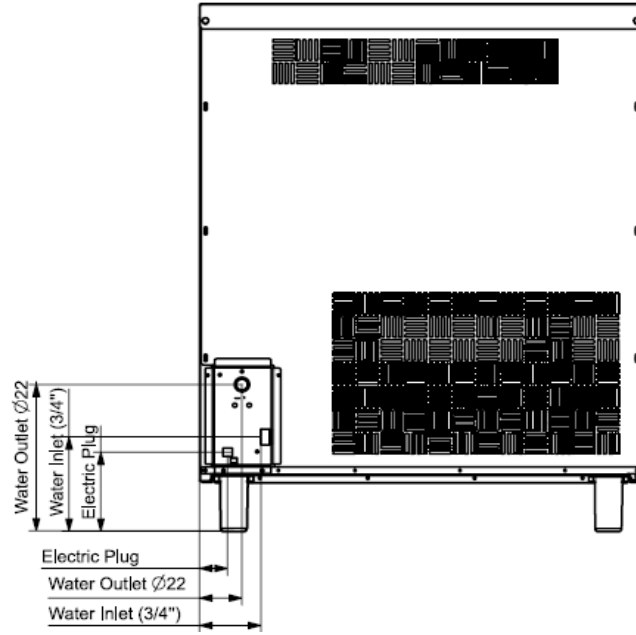
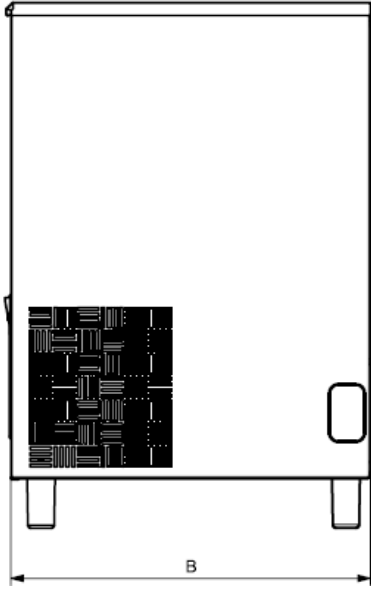
3 gr/unit

Certifications





Product Dimensions



Model	A (mm)	B (mm)	C (mm)	D (mm)	Water Inlet Horizontal (mm)	Water Inlet Vertical (mm)	Water Outlet Horizontal (mm)	Water Outlet Vertical (mm)	Electric Plug Horizontal (mm)	Electric Plug Vertical (mm)
FR85S	500	670	800	D1-D2	91	255	53	188	47	133
FR125S	738	600	822	D1-D2	103	163	71	253	47	133

Option	D (mm)	
Standard Adjustable Feet	D1	95
Short Adjustable Feet	D2	10

Limits

- Water inlet 3/4"
- Water outlet 22 mm
- Water Pressure Min 1 Bar/Max 5 Bar

All technical informations must be considered as following conditions

Ambient temperature : 10°C

Water temperature : 10°C

Electric consumption at : 20°C (Standard Voltage)

The company has right to change all informations without notification

Ice Making Capacities

Ambient Tem. °C	Water Temperature °C			
	10°	15°	21°	32°
10°	100%	98%	95%	93%
21°	98%	96%	90%	87%
32°	90%	87%	80%	78%
38°	80%	75%	70%	60%



