

frozy®

FR500



► Usage Areas



Hotel



Restaurant



Fast Food



Cocktail



Disco



Industry



► Technical Information

Daily Production Capacity	450 kg	Finish	AISI 304 SS Scotch Brite
Store Capacity	Available SB200/SB400	Cooling System	Air
Ice Capacity Per Cycle	260/360 Units	Product Dimension w*d*h	761*622*726
Refrigerant Gas	R404a	Packing Dimension w*d*h	820*680*905
Current	16 A	Net Weight	103 kg
Maximum Power	2500 W	Loading Quantities 20 HC	69 Units
Daily Electric Consumption	61,5 kW	Loading Quantities 40 HC	144 Units
Voltage	230V-50/60Hz	Loading Quantities Optima	162 Units
	115V-60 Hz		

► Special Features



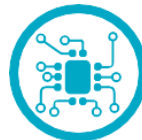
Easy Clean
Air Filter



Air Cooling



Easy Clean
Surface



Electronic
Control



T Climate
Type

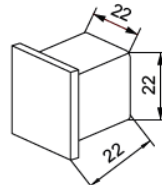


Easy
Access



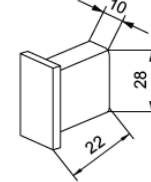
Multifunction
Button

► Ice cubes and size



Full Dice Ice

260 Units/Cycle
12 gr/unit



Half Dice Ice

360 Units/Cycle
6 gr/unit

► Certifications



frozy®

TASIS MAK.MÜH.SAN.TİC.A.Ş.
Org.San.Böl.34.CD.NO:11,
26110, Eskişehir/Türkiye
+ 90 222 236 82 20
+ 90 222 236 82 21
info@frozy.com.tr

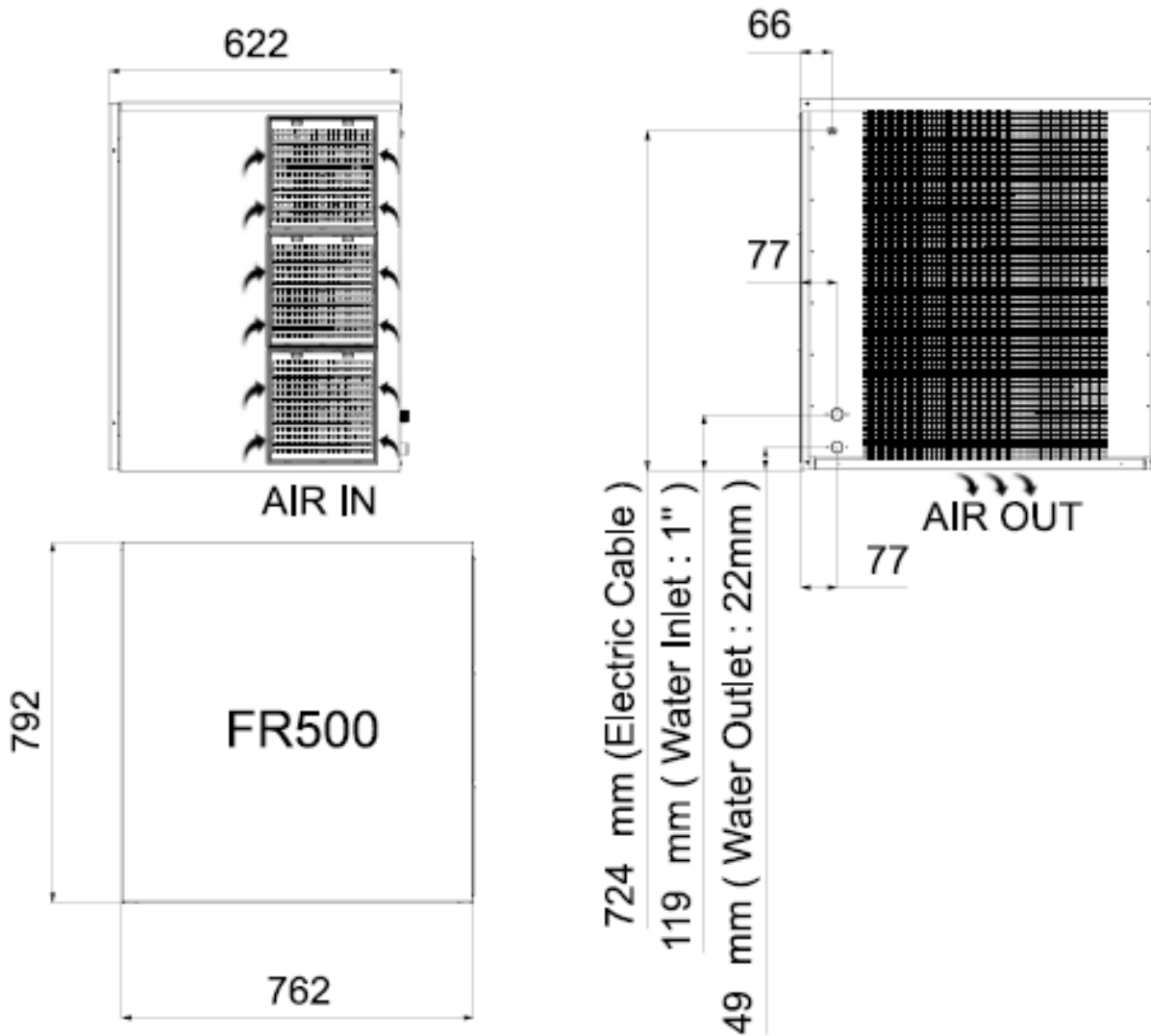
CLIMAX COOLER MAK.MÜH.DAN.A.Ş.
Org.San.Böl.34.CD.NO:11,
26110, Eskişehir/Türkiye
+ 90 222 236 82 20
+ 90 222 236 82 21
info@climaxcooler.com



www.frozy.com.tr



▶ Product Dimensions



▶ Limits

- Water inlet 1"
- Water outlet 22 mm
- Water Pressure Min 1 Bar/Max 5 Bar

All technical information must be considered as following information

Ambient temperature 20°C

Water temperataure :15°C

Electric consumption at :32°C Ambient / 21°C Water (Standard Voltage)

The company has righth to change all informations without notification

▶ Ice Making Capacities

R404a

Ambient Tem. °C	Water Temperature °C			
	10°	15°	21°	32°
10°	100%	98%	95%	93%
21°	98%	96%	90%	87%
32°	90%	87%	80%	78%
38°	80%	75%	70%	60%

